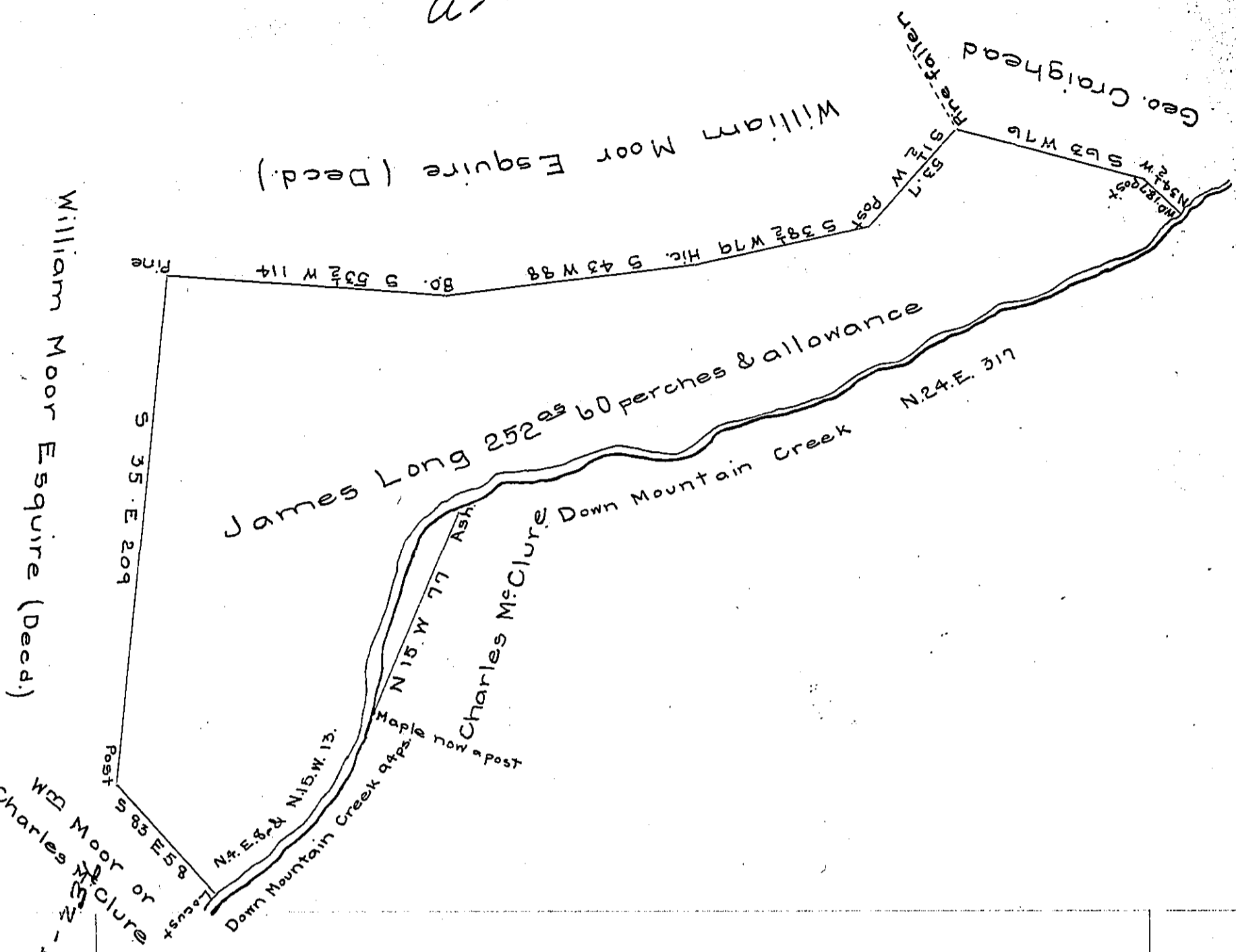


a-17-65-



WM Moor or Charles McClure  
252-60-13

The draft of a tract of land situate in Middleton township Cumberland County containing two hundred & fifty two acres & sixty perches & allowance &c. Resurveyed the 23<sup>rd</sup> of April 1805 on a warrant granted to James Long dated the 24<sup>th</sup> May 1753.

To Saml. Cochran Esquire }  
Surveyor Genl of Pennsyl<sup>a</sup> }

W<sup>m</sup> Ramsey D.S.

IN TESTIMONY that the above is a copy of the original remaining on file in the Department of Internal Affairs of Pennsylvania, made conformably to an Act of Assembly approved the 16th day of February, 1833, I have hereunto set my Hand and caused the Seal of said Department to be affixed at Harrisburg, this first day of March 1906

*Goach D. Brown*  
Secretary of Internal Affairs.